

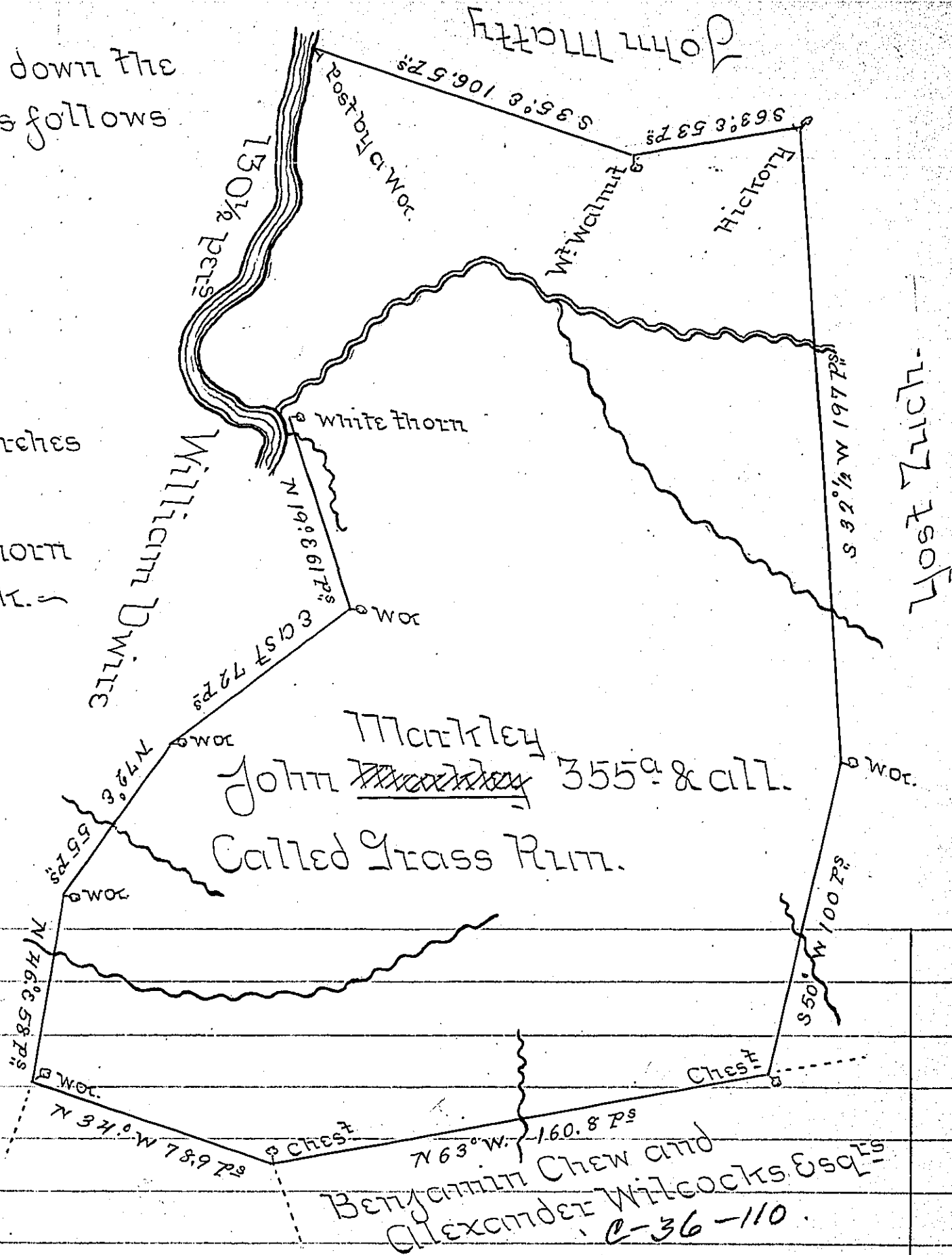
FORM No. 1.

The Courses down the River are as follows

- N 75°-E--26.9
- N 74°-E--15.5
- N 57°-E--29
- N 65°-E--29
- N 20°-E 12.5
- x 27°-W-27.5 perches

130.5

to a White thorn on the Bank.



Situated on the West side of Castleman's River above the Mouth of Loud Run on Grass Run in Brothers Valley Township Bedford County and surveyed the 24th day of March 1775. In pursuance of a Warrant dated December 15th 1774

By *John Dep^t*

To John Suters Esq^r S^r

IN TESTIMONY that the above is a copy of the original remaining on file in the Department of Internal Affairs of Pennsylvania, made conformably to an Act of Assembly approved the 16th day of February, 1833, I have hereunto set my Hand and caused the Seal of said Department to be affixed at Harrisburg, this twenty seventh day of December 1905.

Loa e R. Brown
Secretary of Internal Affairs.